



# DV SERIES

D2V/D3V/D4V

THE SMART CHOICE  
CURVE | QUICK | SOLID

Service  
& Support

05

Ultra Solid  
Performance

- Higher Image Quality
- New Cabinet Frame
- Waterproof Design

03

Feature

Fast and Accurate  
Curve System

- Innovative Side Lock Design

01

04

Esay to Install

- Platform Design
- Hanging Bar & Stacking System
- Accessories

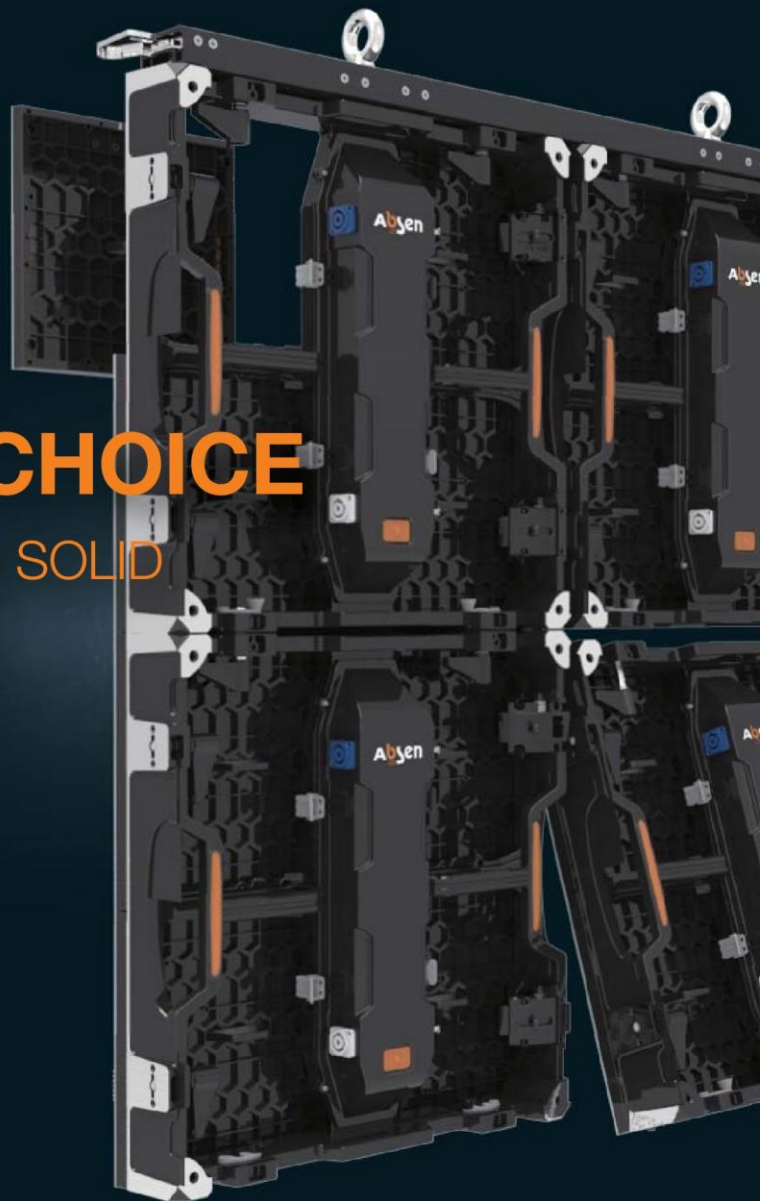
02

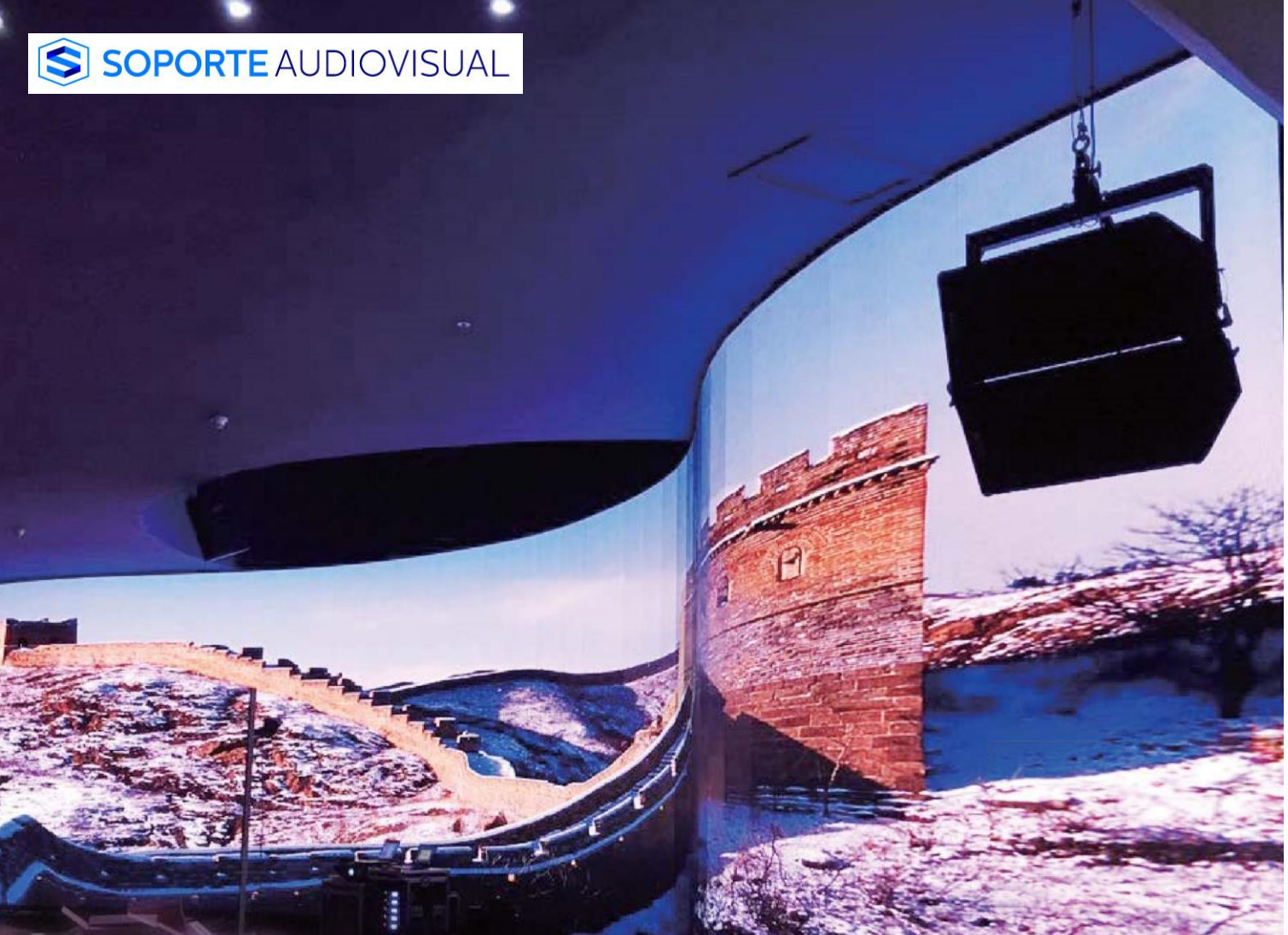
Quick Installation  
and Maintenance

- Front & Rear Module Maintenance
- Edge Protection
- Quick Swappable Power Box

# THE SMART CHOICE

CURVE | QUICK | SOLID





1 Fast and Accurate **CURVE** System



## • Innovative Side Lock Design

There is no need of any additional tool to quickly adjust from flat screen to a curved one.

Enable  $-7.5 \sim 10^\circ$  at every  $2.5^\circ$  step, support  $+10^\circ, \pm 7.5^\circ, \pm 5^\circ, \pm 2.5^\circ, 0^\circ$

Absen proprietary locking system, more solid, more accurate.



5° Curve



Two side locks, solid and easy to use



## ② QUICK

### Installation and Maintenance



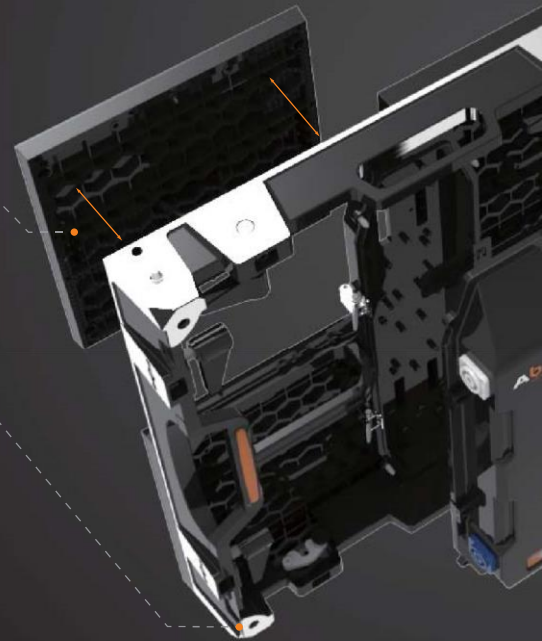
- **Front & Rear Module Maintenance**

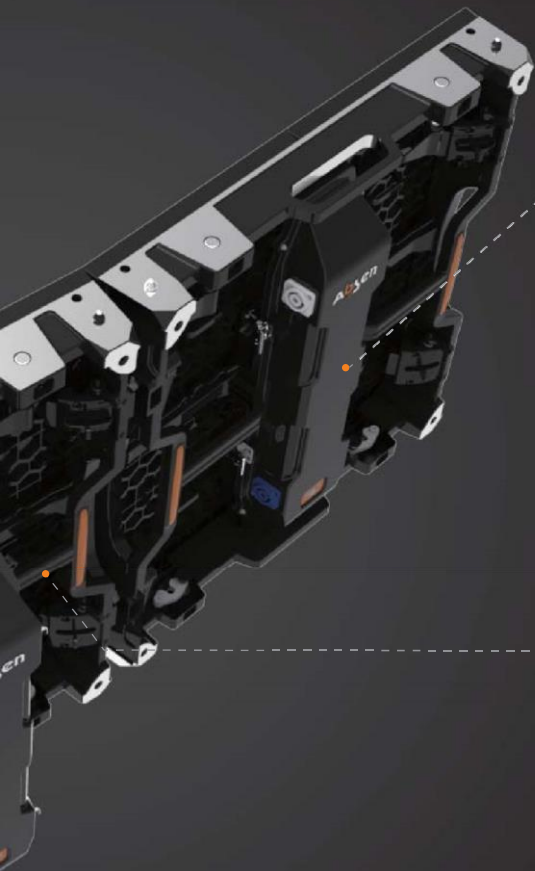
Supports front & rear maintenance, easy to replace module.



- **Edge Protection**

Step designed on bottom of the cabinet, keep LEDs away from ground.





- **Quick Swappable Power Box**

Replace in seconds with a quick release system.  
Serviceable from the back without tools.



- **One Man Installation**

Quick and simple to use top locks, designed for easy  
one man handling



3 Ultra**SOLID** Performance

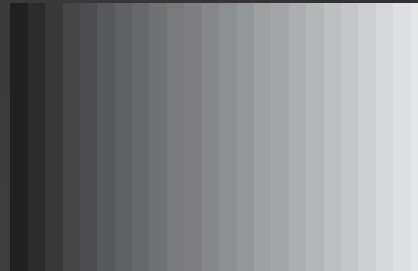


- Higher Image Quality

Combined with grey scale coding technology that is human eye friendly, the new control system has greatly improved the industry-common problem of losing grey scale at low brightness, to provide a much more vivid image.



After



Before



New Cabinet Frame Is  
Stronger, More Accurate

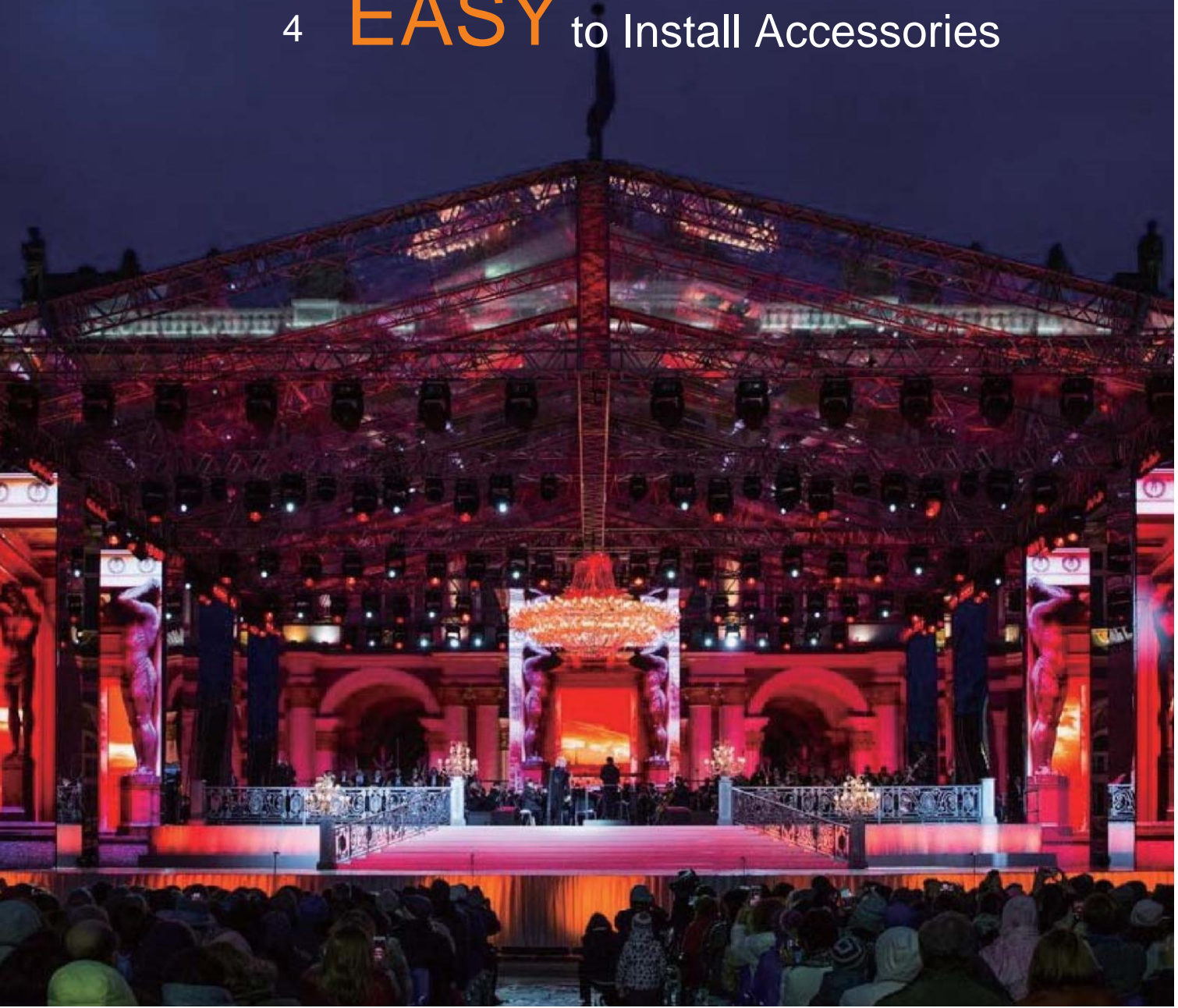


- **Waterproof Design**

IP65 waterproof design for D3V outdoor & D4V outdoor, ultra reliable in all weather conditions. One platform for both indoor and outdoor.



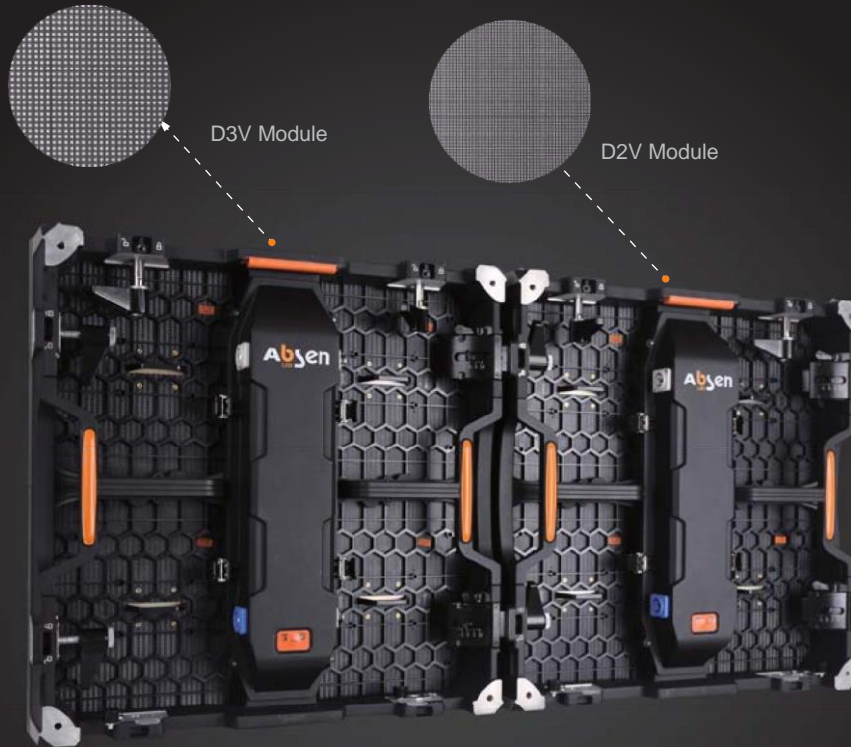
# 4 EASY to Install Accessories



## • Platform Design

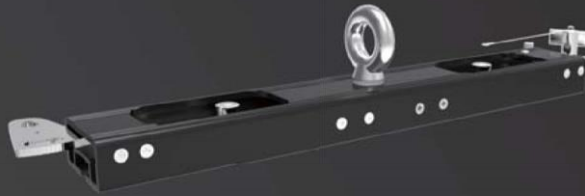
3 different pixel modules can be used on one frame.

Save customer money on product, accessories and training.

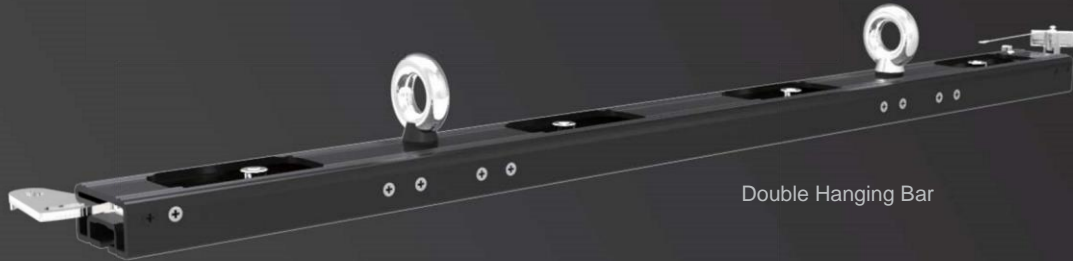


## • Hanging Bar

Super lightweight, simple to use hanging bars with integrated curve plate.  
Stringent pulling strength test to assure safe use, guaranteed reliability.



Single Hanging Bar

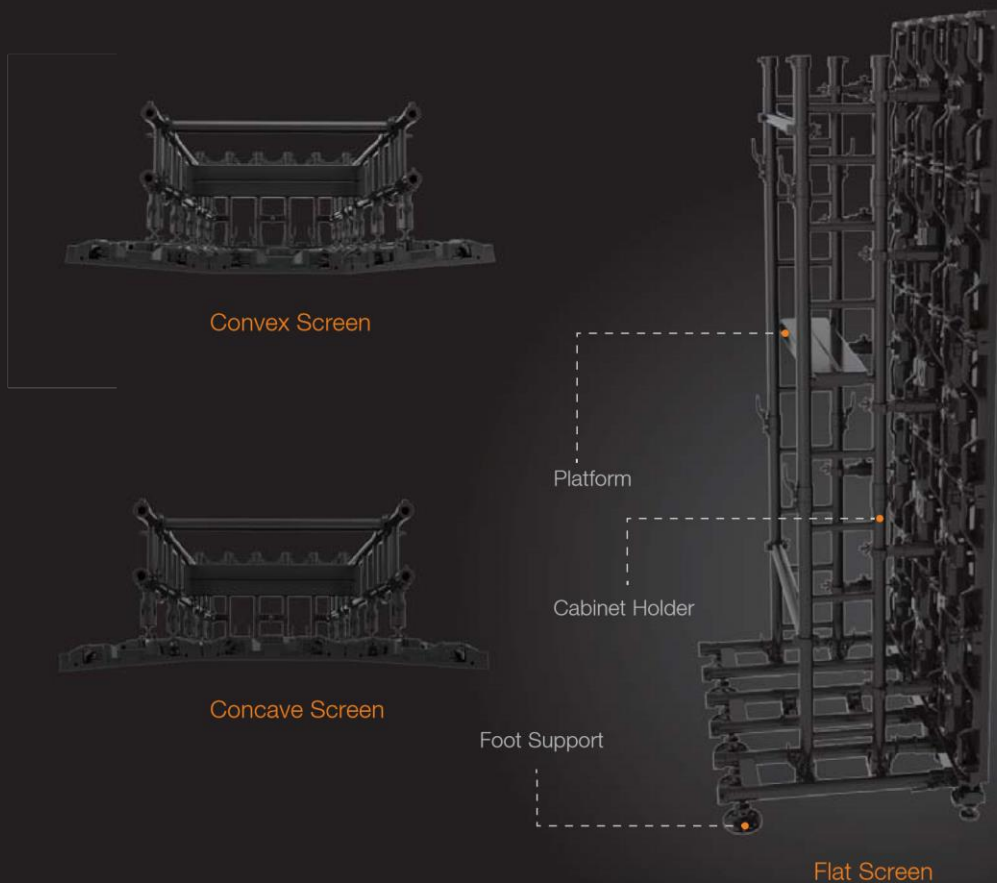


Double Hanging Bar

Hanging Bar comes in two styles and sizes

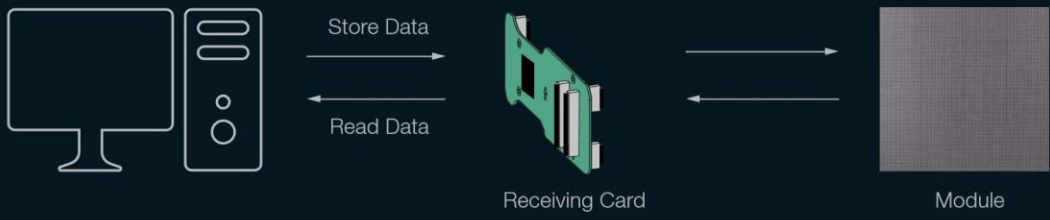
## • Stacking

Designed by industry veteran, the latest Universal Stacking System is simple to use, reliable in quality, with all details considered from massive experience of on field use. The tool free installation design makes it a lot easier for technicians who will never need to look around for tools.



## • MoM

Memory on module design enables to store data in both receiving card and the modules. When module or receiving card is replaced due to repair reason, there is no need of re-calibration.



## • Shipping

Super lightweight 6 in 1 flight case, half weight of ordinary design. Save weight, save cost



6 In 1 Flight Case

## • Processing

Premium image quality, 4K processing







## 5 Service & Support



# 8+ Overseas Subsidiaries

USA Germany UAE Russia Mexico Brazil Japan HK



### Barcode

Barcodes to trace product details



### Solutions

Complete solutions enhances operation efficiency



### Online Service

Helpline 400, 24 hours online service



### Zero Down Payment

Set "Zero Down Payment" as industrial standard



### ACE

ACE training - global accessibility



### Network System

Whole network system makes life easier



### Platform

Build platform for more active interaction



### Customized

Customized products for clients

ACE, short for ABSEN CERTIFIED ENGINEER, is a program launched by Absen in the purpose of training our clients, freelancers, whoever might need to work with our screens, to better know the use and maintenance of our products. Since 2013, Absen has successfully trained and certified hundreds of technicians worldwide to better understand LED technology and Absen products. Unlike other leading companies, Absen is offering such services completely free of charge. It has greatly benefited both our clients and Absen ourselves.



## PARAMETERS

	D2V	D2V Plus	D3V	D3V Plus	D3V Outdoor	D4V Outdoor
Pixel Pitch (mm)	2.97		3.9		3.9	4.8
Pixel Configuration	Black SMD2121		Black SMD2121		SMD1921	SMD2525
Brightness (nit)	1,000		1,000		4,500	4,500
Color Contrast	7,000:1		7,000:1	7,500:1	/	/
Refresh Rate (Hz)	1,920/ 3,840		1,920	1,920/ 3,840	1,920	1,920
Module Size	250*250		250*250		250*250	250*250
Pixel Matrix Per Cabinet	168x168		128x128		128x128	104x104
Power Consumption (Max./Avg.)(W/m <sup>2</sup> )	540/180	450/150	510/170	450/150	630/210	750/250
Viewing Angle (H/V)	150°/140°		150°/130°		140°/120°	140°/110°
IP Rating (Front/Rear)	IP40/IP21		IP40/IP21		IP65/IP54	IP65/IP54
Panel Dimensions (WxHxD)/(mm)	500x500x100		500x500x100		500x500x100	500x500x100
Panel Weight (kg)	9		9		9.5	9.5
Panel Material	Die Casting Aluminum		Die Casting Aluminum		Die Casting Aluminum	
AC Operating Voltage	100V~240V		100V~240V		100V~240V	100V~240V
Operating Temperature	-10℃~+40℃		-10℃~+40℃		-20℃~+50℃	-20℃~+50℃
Driving Type	1/28		1/16		1/8	1/7
Module Maintenance	F/R		F/R		Front/Rear	Front/Rear
Certificate	/	CE+ROHS	/	CE+ROHS	CE+ROHS	/

★ Shenzhen Absen Optoelectronic Co., Ltd. reserves the right to modify product design, specifications, and parameters without further notice.

Photos are used for illustration purpose only as products may differ from these photos. All rights reserved by Shenzhen Absen Optoelectronic Co., Ltd.

### Shenzhen Absen Optoelectronic Co., Ltd.

18-20F Building 3A, Cloud Park, Bantian, Longgang District, Shenzhen 518129, P.R.China

T: +86-755-89747399 E: absen@absen.com  
F: +86-755-89747599 W: www.absen.com

### Absen Inc.

7120 Lake Ellenor Drive, Orlando, FL 32809, USA

T: +1-407-203-8870 E: info@usabsen.com  
F: +1-407-203-8873 W: www.usabsen.com

### Absen GmbH

Eisenstraße 5, 65428 Rüsselsheim a.M., Germany

T: +49 (0) 6142 78935-0 E: europe@absen.com  
F: +49 (0) 6142 78935-29 W: www.absen-europe.com